

# Downtown Chatham Parking & Circulation Study

---

A Review of Existing Conditions, Data  
Collection Efforts, Potential Solutions &  
Next Steps

**JULY 30, 2024 – CHATHAM TOWN OFFICE ANNEX**



CAPE COD  
COMMISSION

# Project Team

CAPE COD COMMISSION & TOWN OF CHATHAM STAFF

---

David Nolan (Project Manager)  
*Senior Transportation Planner*

Colleen Medeiros  
*Transportation Program Manager*

Joyia Smikle  
*Transportation Planner*



CAPE COD  
COMMISSION

Kathleen Donovan  
*Community Development Director*

Rob Faley  
*DPW Director*

Parking Solutions Working Group



# Agenda

TONIGHT'S DISCUSSION POINTS

1. Project Background & Photo Inventory

2. Data Collection

3. Potential Parking Management Solutions

4. Potential Circulation Management Solutions

5. Other Solutions

6. Next Steps & Questions/Discussion

# Chatham Parking & Circulation Goals

AS IDENTIFIED IN THE 2024 CAPE COD UNIFIED PLANNING WORK PROGRAM

---

Develop a set of potential ***parking*** improvements aimed at improving the safety and efficiency of moving people and goods throughout Downtown Chatham.

Develop a set of potential ***roadway*** improvements aimed at improving the safety and efficiency of moving people and goods throughout Downtown Chatham.

Improve signage for all roadway users.

Solicit Town staff, committee, and public feedback on all potential improvements.

# Common Study Elements

BASED ON OTHER CAPE COD PARKING STUDY EXAMPLES

---

“The goal of this project was to identify improvements to parking and circulation that will increase safety for pedestrians, bicyclists and vehicle drivers, encourage commerce, and enhance community character in the Village Center.”

Orleans Parking and Circulation Study (2018)

- Existing Conditions
  - Parking assessment (Downtown lots & on-street parking)
  - Circulation assessment (traffic counts, non-motorist amenities, etc.)
- Outreach (PSWG, Merchant’s Association & the Public)
- Potential Solutions
  - Infrastructure improvements
  - Parking management strategies

# The Road Ahead

## PROJECT TIMELINE

Summer '23

**Data Collection:**  
Parking lot counts on 7/28, 8/5, 8/7, & 8/22 (7/1/24 – Fish Pier)

Fall '23

**Project Overview:**  
Review methodology and data, meet with Parking Solutions Working Group and build a path forward

Winter/  
Spring '24

**Alternative Analysis:**  
Through the Working Group, create potential alternatives to improve parking and circulation in Downtown Chatham.

Summer '24

**Alternatives Review:**  
Present potential alternatives to Town staff, Working Group and Public and solicit feedback on potential improvements

Summer/  
Fall '24

**Draft Report:**  
A draft report delivered to the Town for feedback outlining the entire study process and the preferred alternatives

Fall '24

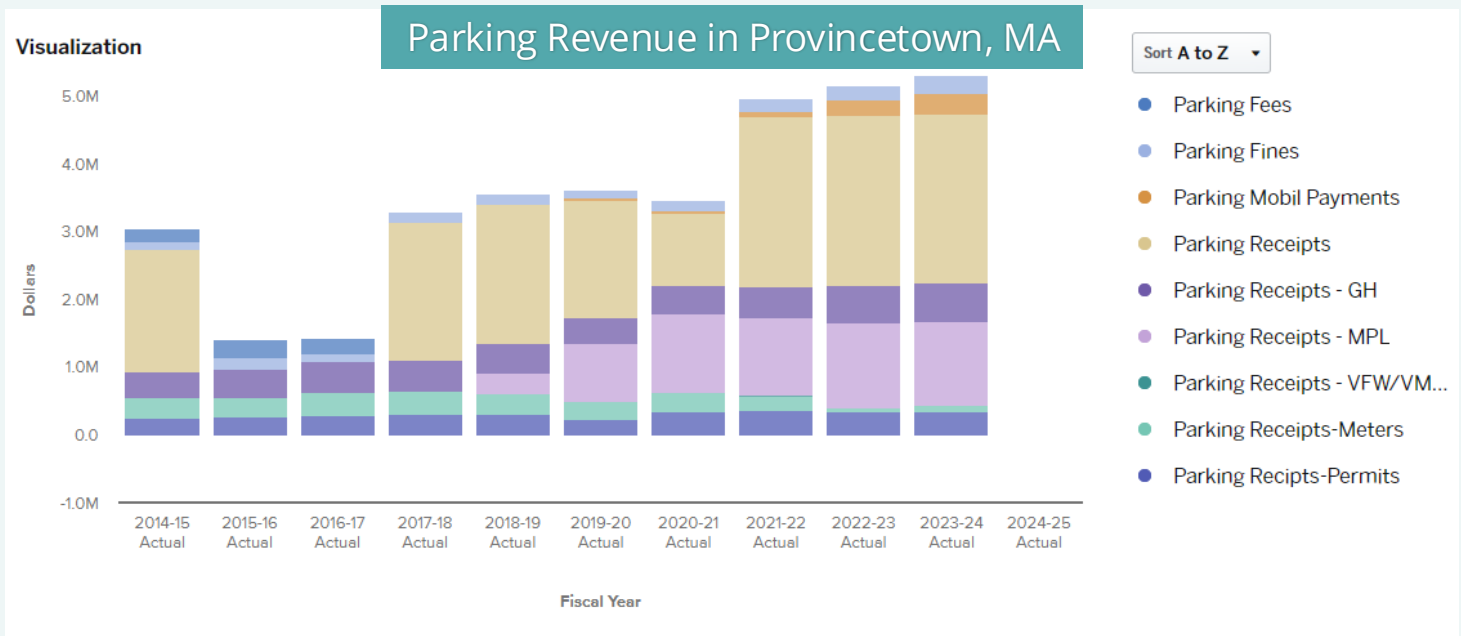
**Final Report:**  
A final report will conclude the project and be delivered to the Town.

# Town Comparisons

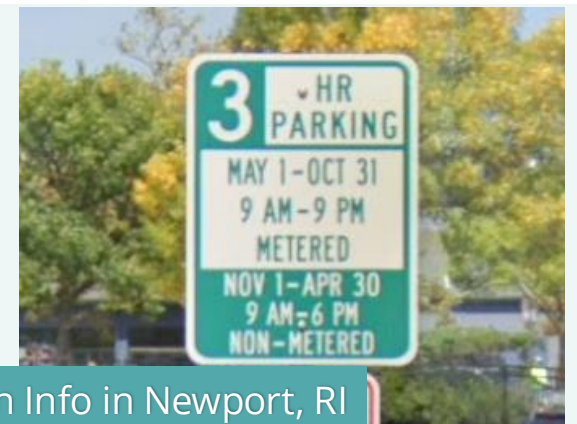
PLYMOUTH, PROVINCETOWN & NEWPORT EXAMPLES



Free, Electric Shuttle in Plymouth, MA



- November 1 - April 30: Free
- May 1 - October 31: \$3 per hour, and \$20 per day, \$30 Overnight
- Newport Residents: up to 3 hours free, once per day with valid resident sticker, must enter plate at kiosk or via Passport App.

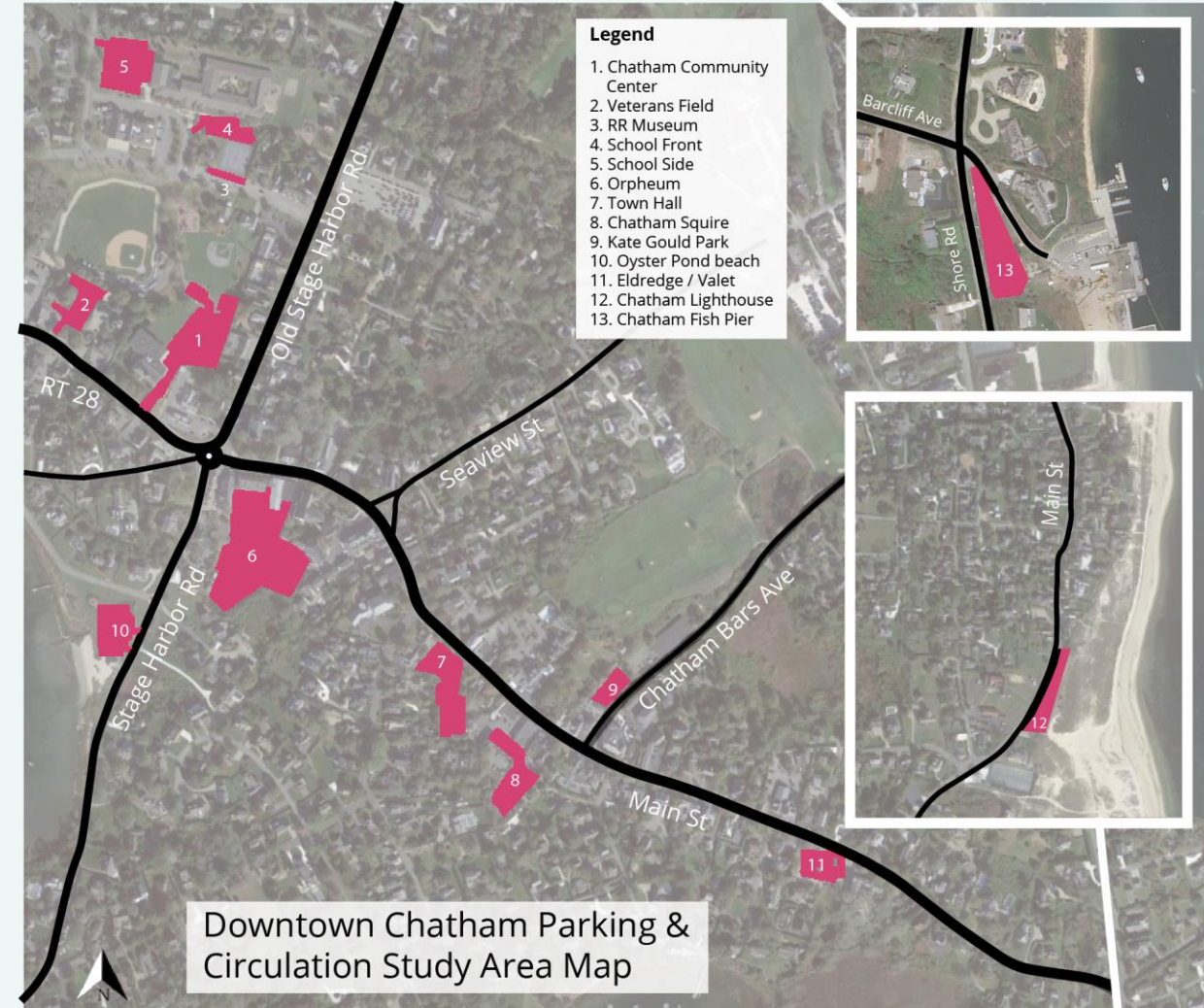


Parking Restriction Info in Newport, RI

# Project Area

## DOWNTOWN CHATHAM STUDY AREA

- Main Street Parking & Adjacent Lots (Lighthouse & Fish Pier)
- Chatham Bars Ave intersection, Shore Rd @ Barcliff Ave, Depot Road, Route 28 @ Main Street (Rotary)
- Multi-Modal Facilities (i.e., curb ramps, sidewalks, crosswalks, bicycle parking, etc.)



# Parking

## DOWNTOWN CHATHAM PARKING INFRASTRUCTURE PHOTO INVENTORY



Faded Parking Lines at Community Center



Veterans Field Lot on Weekend



Trailer Using Three Spaces



Community Center Lot Over Capacity



Ticketed Vehicle In Full Lot



On-Street Parking

# Parking

## DOWNTOWN CHATHAM PARKING INFRASTRUCTURE PHOTO INVENTORY



On-Street Parking on Depot Rd.



Community Center Overflow



Squire Lot



Main Street Limited Parking Area



Veterans Field Parking Lot



Public Parking Map

# Signage

## DOWNTOWN CHATHAM PARKING SIGNAGE INVENTORY



Signage in Town Hall Lot



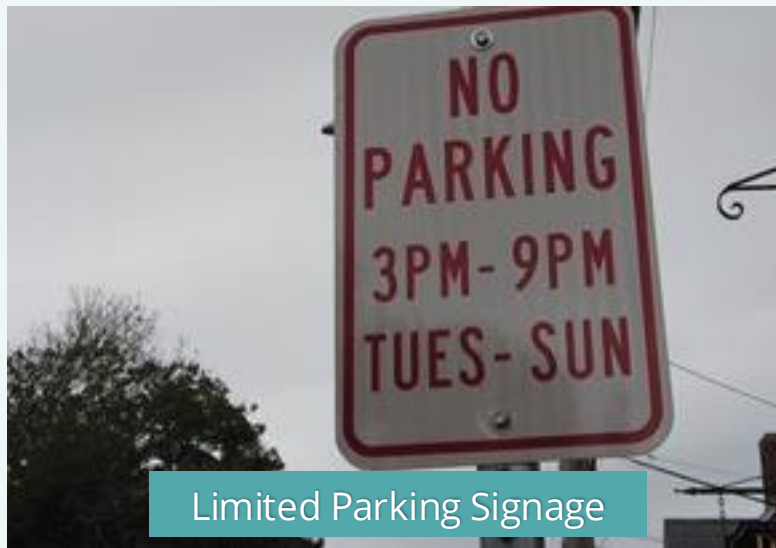
Public Parking Signage



Kate Gould Park Signage



Lighthouse Parking Signage



Limited Parking Signage



Squire Lot Signage

# Other Accommodations

MULTI-MODAL – BIKE PARKING, CROSSWALKS, HANDICAP PARKING, CURB RAMPS



Bicycle Parking at Town Hall



Crosswalks on Main Street



ADA Curb Ramps



Crosswalk at Lighthouse



Handicap Parking

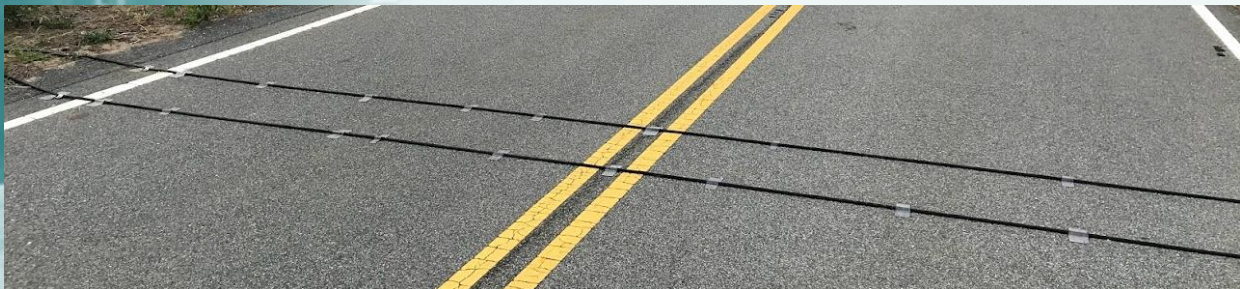


Walkway From School to Comm. Center

# Traffic Counts

SPEEDS, CLASSIFICATION, VOLUMES & TURNING MOVEMENTS

- Main Street East of Seaview Ave
- Main Street West of Shore Rd
- Shore Rd North of Main Street
- Seaview Ave North of Main Street
- 5 approaches to the Route 28 Rotary
- TMC at Main Street/Chatham Bars Ave intersection



# Bicycle & Pedestrian Count

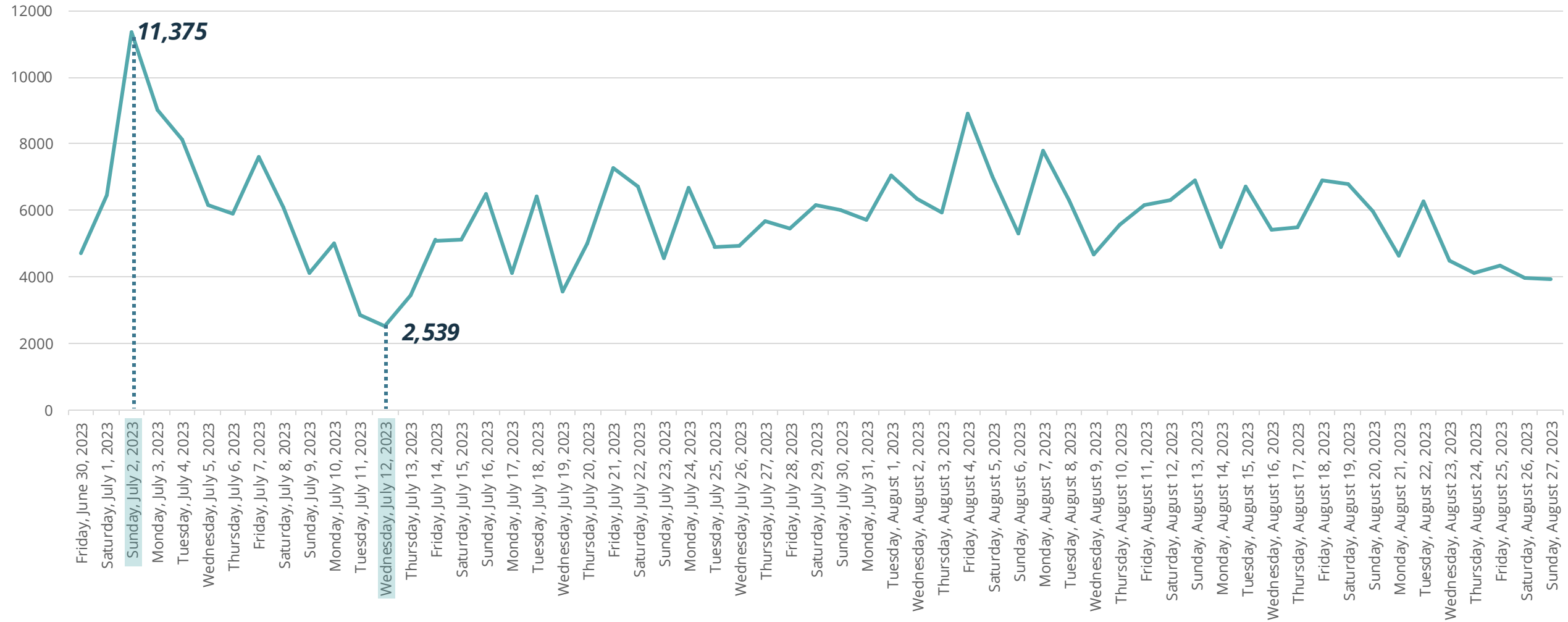
JULY 3RD, 2023, 12-HOUR NON-MOTORIST COUNT (7AM-7PM)



# Long Term Pedestrian Counter

JUNE 30, 2023 - AUGUST 27, 2023 (OVER 341,000 USERS PASSED THE COUNTER\*)

## Total Pedestrians Utilizing the Sidewalk in front of the First United Methodist Church

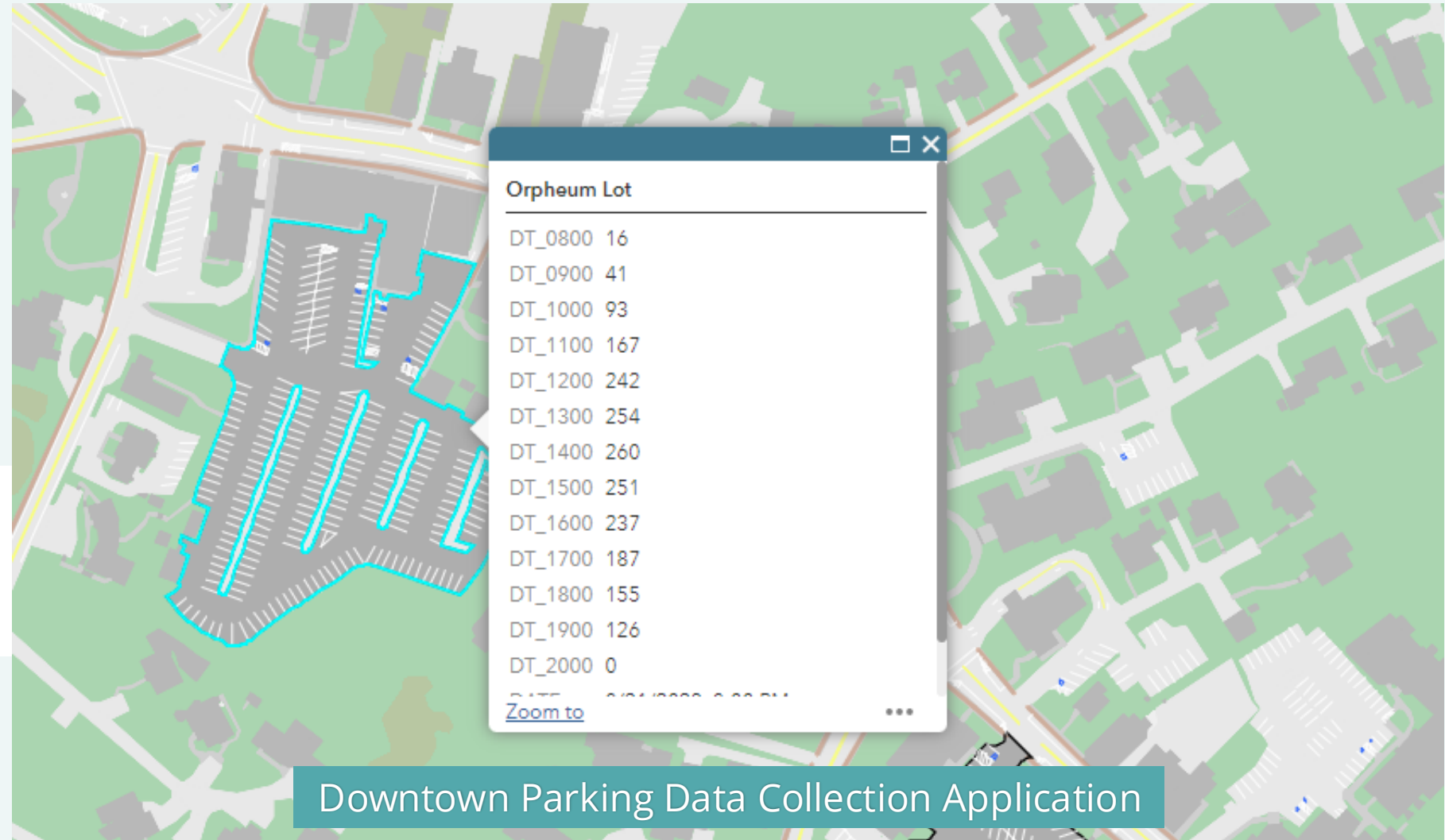


# Other Data Collection Efforts

PEDESTRIAN COUNTER & DATA COLLECTION APPLICATION



Pedestrian Counter



Downtown Parking Data Collection Application

# Parking Lot Counts

## BALLFIELD AREA LOTS

1. Chatham Community Center (105 spots)
2. Veterans Field (55 spots)
3. RR Museum (21 spots)
4. School Front (35 spots)
5. School Side (74 spots)



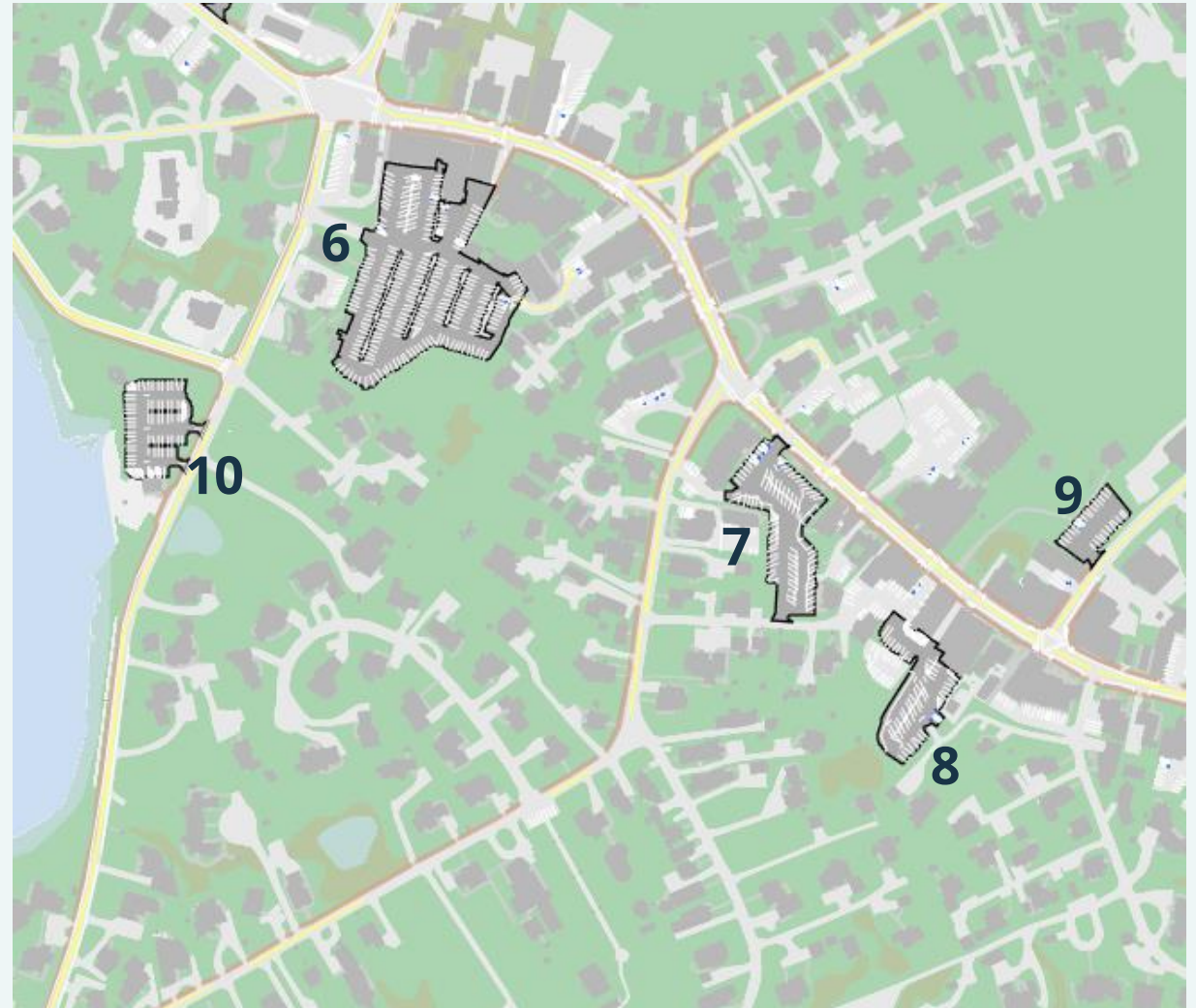
Veterans Field Parking



# Parking Lot Counts

## DOWNTOWN CORE LOTS

- 6. Orpheum (240 spots)
- 7. Town Hall (71 spots)
- 8. Chatham Squire (57 spots)
- 9. Kate Gould Park (27 spots)
- 10. Oyster Pond Beach (60 spots)



# Parking Lot Counts

## OTHER LOTS/ON-STREET PARKING

11. Eldredge/Valet (125 spots)

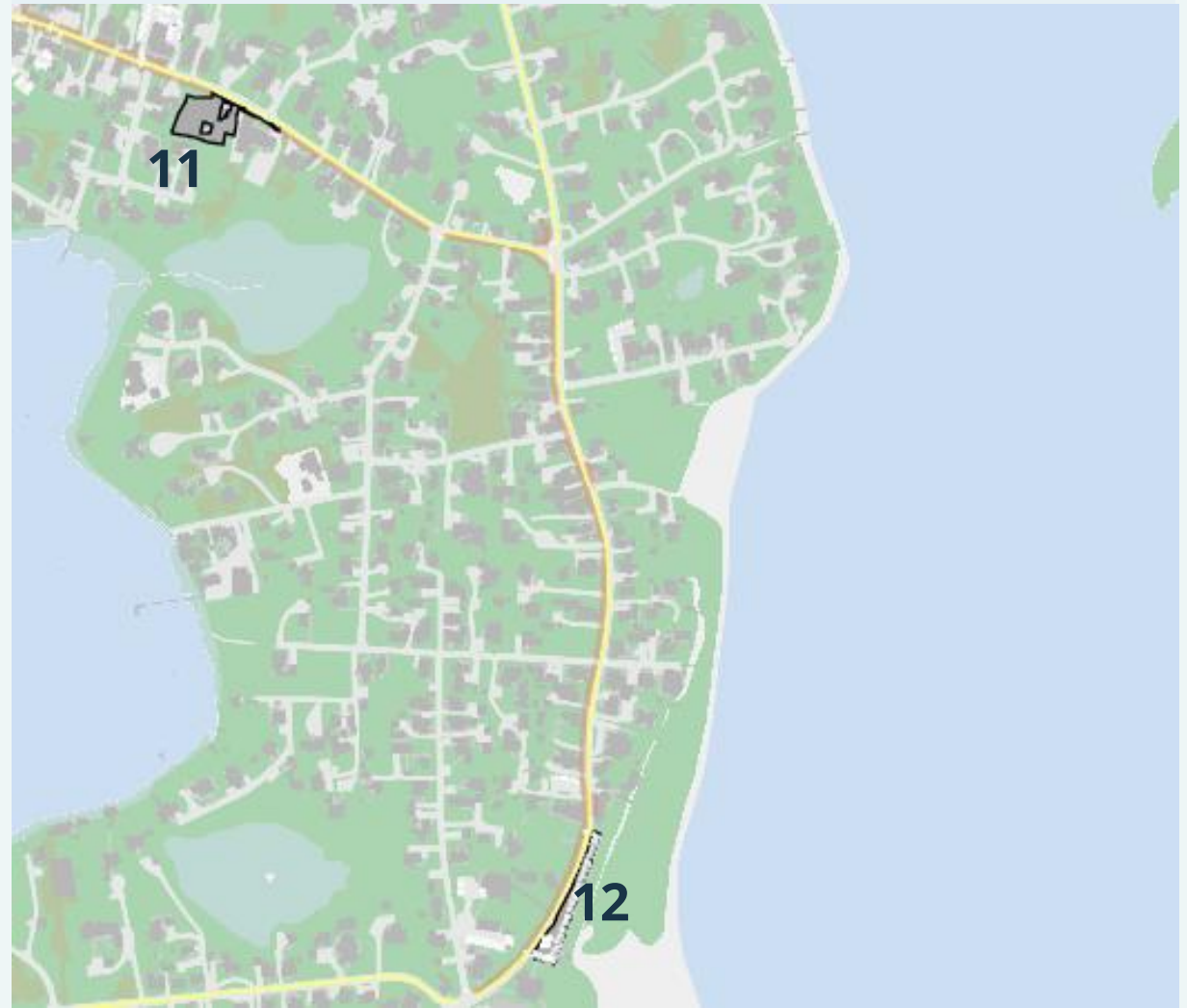
12. Chatham Light (50 spots)

13. *Fish Pier (58 Spots)*

- Main Street – On-Street (approx. 142 spots)

- Chatham Bars Ave – On-Street (6 spots)

*- Parking Areas on Main Street from the intersection of Route 28 to 443 Main Street*



# Parking Lot Count Data (Percent Full)

FRIDAY JULY 28, 2023 – CHATHAM ANGLERS GAME & CONCERT AT KATE GOULD PARK

Time	On-Street	Orpheum Lot	Town Hall	Squire Lot	Kate Gould	Eldredge/ Valet	Chatham Light	Oyster Pond	Community Center	Veteran's Field	RR Museum	School Front	School Side
8:00 AM	31%	8%	32%	16%	33%	0%	64%	17%	5%	2%	19%	0%	8%
9:00 AM	40%	17%	59%	23%	93%	2%	70%	38%	30%	7%	57%	3%	11%
10:00 AM	67%	37%	99%	58%	115%	5%	54%	37%	28%	7%	90%	6%	11%
11:00 AM	77%	64%	107%	77%	111%	11%	76%	55%	28%	42%	90%	11%	11%
12:00 PM	85%	87%	106%	82%	122%	22%	86%	48%	48%	65%	67%	3%	8%
1:00 PM	84%	98%	110%	75%	100%	26%	76%	60%	27%	35%	62%	6%	8%
2:00 PM	85%	93%	110%	81%	104%	69%	56%	73%	24%	36%	43%	0%	11%
3:00 PM	78%	83%	99%	75%	107%	56%	64%	65%	31%	40%	38%	0%	8%
4:00 PM	82%	65%	106%	81%	107%	42%	64%	60%	57%	58%	52%	6%	11%
5:00 PM	82%	80%	103%	81%	93%	31%	50%	42%	121%	131%	81%	17%	14%
6:00 PM	82%	81%	97%	79%	96%	21%	54%	38%	118%	140%	90%	40%	24%
7:00 PM	87%	102%	114%	84%	115%	30%	44%	32%	130%	131%	90%	46%	53%



# Parking Lot Count Data (Percent Full)

SATURDAY AUGUST 5, 2023 – CRAFT FAIR AT THE CHATHAM COMMUNITY CENTER

Time	On-Street	Orpheum Lot	Town Hall	Squire Lot	Kate Gould	Eldredge/ Valet	Chatham Light	Oyster Pond	Community Center	Veteran's Field	RR Museum	School Front	School Side
10:00 AM	85%	50%	90%	65%	100%	12%	60%	48%	97%	24%	67%	6%	5%
11:00 AM	81%	103%	115%	79%	104%	26%	72%	83%	114%	64%	90%	9%	8%
12:00 PM	87%	106%	118%	82%	104%	53%	98%	97%	117%	76%	95%	37%	9%
1:00 PM	99%	105%	113%	81%	111%	65%	92%	87%	116%	84%	81%	34%	15%
2:00 PM	94%	109%	117%	84%	111%	82%	82%	92%	106%	67%	81%	6%	8%
3:00 PM	88%	96%	113%	82%	107%	58%	74%	83%	97%	51%	71%	6%	4%
4:00 PM	87%	94%	115%	86%	122%	50%	72%	53%	89%	35%	62%	6%	3%
5:00 PM	83%	80%	89%	86%	100%	29%	76%	48%	42%	33%	19%	11%	3%



# Parking Lot Count Data (Percent Full)

MONDAY AUGUST 7, 2023 – MONDAYS ON MAIN (CONCERT AT KATE GOULD)

Time	On-Street	Orpheum Lot	Town Hall	Squire Lot	Kate Gould	Eldredge/Valet	Chatham Light	Oyster Pond	Community Center	Veteran's Field	RR Museum	School Front	School Side
8:00 AM	16%	8%	27%	30%	33%	6%	64%	12%	14%	2%	29%	0%	7%
9:00 AM	32%	15%	41%	28%	59%	8%	62%	18%	53%	4%	33%	3%	8%
10:00 AM	58%	25%	56%	47%	93%	8%	50%	37%	33%	5%	71%	6%	8%
11:00 AM	82%	61%	83%	100%	104%	13%	58%	53%	35%	11%	86%	6%	8%
12:00 PM	88%	103%	114%	100%	107%	26%	88%	48%	75%	45%	62%	3%	8%
1:00 PM	92%	110%	107%	111%	111%	70%	90%	67%	78%	60%	81%	3%	7%
2:00 PM	94%	105%	111%	109%	111%	80%	100%	93%	100%	84%	95%	6%	12%
3:00 PM	89%	103%	108%	105%	115%	68%	80%	78%	116%	69%	76%	0%	14%
4:00 PM	92%	105%	118%	84%	107%	51%	90%	77%	95%	49%	76%	0%	20%
5:00 PM	89%	103%	111%	82%	111%	38%	82%	30%	53%	33%	67%	6%	12%
6:00 PM	88%	84%	117%	77%	119%	25%	84%	22%	39%	56%	29%	0%	5%
7:00 PM	81%	75%	117%	81%	119%	19%	42%	10%	21%	56%	14%	0%	3%



# Parking Lot Count Data (Percent Full)

TUESDAY AUGUST 22, 2023 – NO EVENTS

Time	On-Street	Orpheum Lot	Town Hall	Squire Lot	Kate Gould	Eldredge/ Valet	Chatham Light	Oyster Pond	Community Center	Veteran's Field	RR Museum	School Front	School Side
8:00 AM	20%	7%	30%	14%	22%	0%	36%	32%	10%	2%	24%	11%	11%
9:00 AM	40%	17%	52%	14%	30%	2%	50%	15%	11%	0%	62%	17%	12%
10:00 AM	57%	39%	63%	28%	78%	1%	60%	10%	17%	4%	95%	26%	12%
11:00 AM	80%	70%	104%	58%	104%	2%	82%	17%	26%	5%	86%	46%	16%
12:00 PM	81%	101%	107%	79%	107%	18%	100%	38%	38%	11%	81%	20%	12%
1:00 PM	82%	106%	108%	82%	126%	33%	96%	42%	40%	7%	86%	14%	12%
2:00 PM	92%	108%	113%	105%	130%	57%	76%	70%	34%	25%	52%	23%	14%
3:00 PM	87%	105%	110%	105%	111%	51%	100%	57%	30%	24%	81%	14%	12%
4:00 PM	81%	99%	108%	109%	119%	32%	88%	58%	21%	22%	38%	11%	14%
5:00 PM	78%	78%	79%	104%	111%	18%	84%	52%	13%	22%	24%	3%	9%
6:00 PM	75%	65%	99%	112%	115%	17%	62%	20%	7%	33%	43%	3%	7%
7:00 PM	79%	53%	104%	116%	119%	18%	54%	27%	18%	25%	33%	0%	7%



# Parking Lot Count Data (Percent Full)

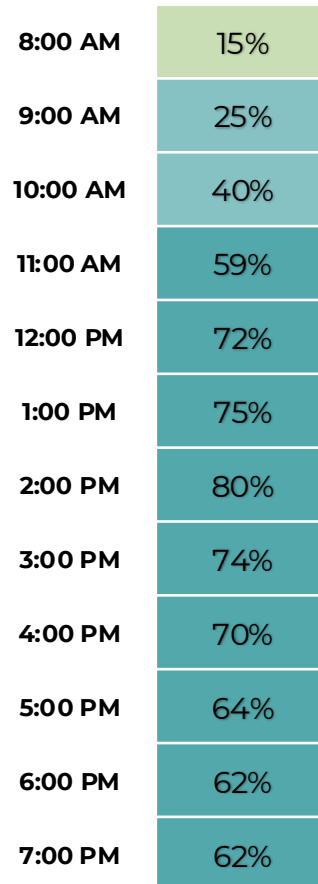
AVERAGE PARKING UTILIZATION – BASED ON COLLECTED DATA

Time	On-Street	Orpheum Lot	Town Hall	Squire Lot	Kate Gould	Eldredge/ Valet	Chatham Light	Oyster Pond	Community Center	Veteran's Field	RR Museum	School Front	School Side
8:00 AM	23%	7%	30%	20%	30%	2%	55%	20%	10%	2%	24%	4%	9%
9:00 AM	38%	16%	51%	22%	60%	4%	61%	24%	32%	4%	51%	8%	10%
10:00 AM	67%	38%	77%	50%	96%	6%	56%	33%	44%	10%	81%	11%	9%
11:00 AM	80%	74%	102%	79%	106%	13%	72%	52%	51%	30%	88%	18%	11%
12:00 PM	85%	99%	111%	86%	110%	29%	93%	58%	70%	50%	76%	16%	9%
1:00 PM	89%	105%	110%	87%	112%	48%	89%	64%	65%	46%	77%	14%	10%
2:00 PM	91%	104%	113%	95%	114%	72%	79%	82%	66%	53%	68%	9%	11%
3:00 PM	85%	97%	107%	92%	110%	58%	80%	71%	69%	46%	67%	5%	9%
4:00 PM	85%	91%	112%	90%	114%	44%	79%	62%	65%	41%	57%	6%	12%
5:00 PM	83%	85%	95%	88%	104%	29%	73%	43%	57%	55%	48%	9%	9%
6:00 PM	82%	77%	104%	89%	110%	21%	67%	27%	55%	76%	54%	14%	12%
7:00 PM	82%	76%	112%	94%	117%	22%	47%	23%	57%	71%	46%	15%	21%



# Parking Lot Count Data (Percent Full)

AVERAGE OCCUPIED PARKING SPACES – BASED ON THE COLLECTED AVERAGE DATA



“A ‘85% Rule,’ a parking industry standard... when occupancy rates routinely reach 85% in the peak hour, more serious parking management strategies are called for.”

*- Hood River, Oregon*

***Overall capacity is under 85% filled across all Downtown lots, however, the “Core” lots are still over 85% capacity for significant portions of the day.***

<25%

25%-49%

50%-84%

85%-100%

>100%

# Chatham Fish Pier

JULY 1, 2024 – TURNOVER AND UTILIZATION COUNTS – PHOTO INVENTORY



Pedestrian Pathway & Signage



Parking Restrictions Signage



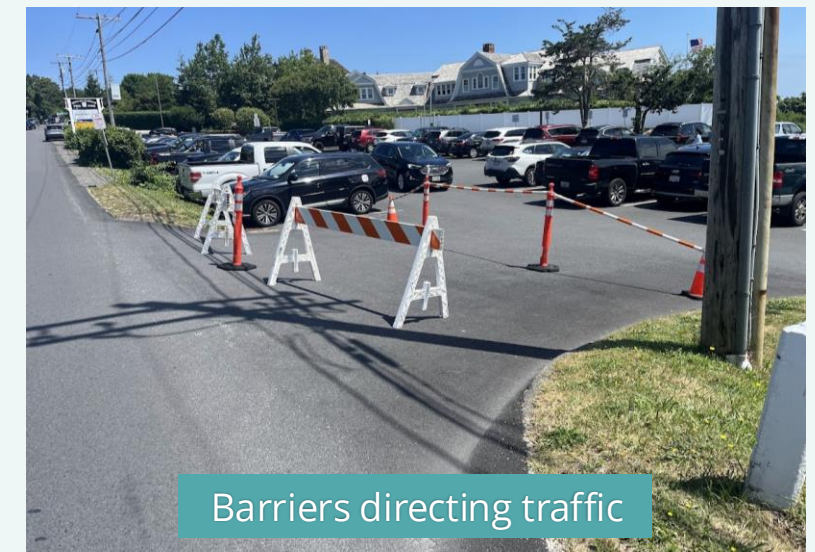
Offsite Parking Signage



Vehicle Using two Spaces



Congestion in Lot



Barriers directing traffic

# Chatham Fish Pier

JULY 1, 2024 – PHOTO INVENTORY



Cyclists Accessing Fish Pier



Parking Restrictions Signage



On-road Parking – Shore Rd.



A Full Fish Pier Parking Lot



Delivery Vehicle Idling in Fish Pier Lot



Crossings at Fish Pier

# Fish Pier Parking Lot Count Data

MONDAY JULY 1, 2024 DATA SUMMARIZATION

## (Percent Full – Upper Lot)

Time	Fish Pier Upper Lot
8:00 AM	53%
9:00 AM	62%
10:00 AM	90%
11:00 AM	97%
12:00 PM	97%
1:00 PM	95%
2:00 PM	97%
3:00 PM	98%
4:00 PM	79%

## (Vehicle Turnover – Upper Lot)

Time	Total Vehicles
Less than .5 Hours	159
.5 to 1 Hour	63
1-2 Hours	32
2-3 Hours	8
3-4 hours	9
4-5 Hours	4
5-6 Hours	6
6-7 Hours	5
7-8 Hours	3
8+ Hours	7

## (Total Vehicles – On Road)

Time	Shore Road
8:00 AM	0
9:00 AM	0
10:00 AM	0
11:00 AM	6
12:00 PM	7
1:00 PM	12
2:00 PM	14
3:00 PM	8
4:00 PM	2

<25%

25%-49%

50%-84%

85%-100%

>100%

# Existing Conditions Review Takeaways

WHAT DID WE NOTICE?

- There is sufficient parking supply in Downtown Chatham, however, the “Core” lots are frequently at or above capacity, but other lots are underutilized
- Signage is different across every lot and roadway
- Lack of ADA compliance in several crosswalk locations



Main Street at Chatham Bars Ave Crosswalk

# Potential Parking Management Solutions

POTENTIAL PARKING MANAGEMENT SOLUTIONS FOR CONSIDERATION/FURTHER REVIEW

---

Uniform Parking Signage

Parking Time Restrictions

Paid Parking

Employee Parking Lot / Spaces

Electric Vehicle Charging

On Street Parking

# Uniform Signage/Wayfinding

PARKING MANAGEMENT SOLUTIONS

- Utilize the same signage at the entrance to each parking lot
- Creates uniformity around Downtown Chatham

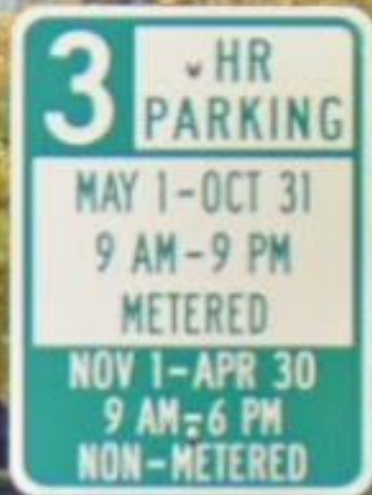


Parking Lot Signage

# Parking Time Restrictions

## PARKING MANAGEMENT SOLUTIONS

- To encourage turnover, consider a Main Street 2-hour time restriction
- Defined parking spaces on Main Street
- Pockets of parking with restrictions



Parking Restriction Signage Newport, RI



Parking Time Restriction Signage

# Paid Parking

## PARKING MANAGEMENT SOLUTIONS

- Consider paid parking lots in the Downtown core with free parking in the outer lots
- Consider making paid parking after 2-hours (First 2-Hours Free)
- “Metered” On-street parking
  - Consider first half-hour free to encourage turnover and accommodate quick trips (bank, post office, etc.)
- “All Provincetown parking revenues from the lots, meters, kiosks, and sale of vehicle permits, are deposited into the Parking Fund... the Parking Fund covers department operations and is then applied to reduce the property tax levy.”



Paid Parking Lot Hyannis, MA

# Employee Parking Lot / Spaces

## PARKING MANAGEMENT SOLUTIONS

- Consider a seasonal employee lot (Elementary School) or designated spaces with stickers for employees (summer months and/or shoulder season)
- Encourage vendor parking at the elementary school lots during special events (i.e. craft fair)



Employee Parking CCH Hyannis, MA

# Electric Vehicle Charging

## PARKING MANAGEMENT SOLUTIONS

- EV charging will be implemented at the Eldredge / Valet Lot
- Potential EV charging at the Elementary School and Community Center (The Town of Chatham is looking into)
- Consider installing EV parking in other Downtown lots

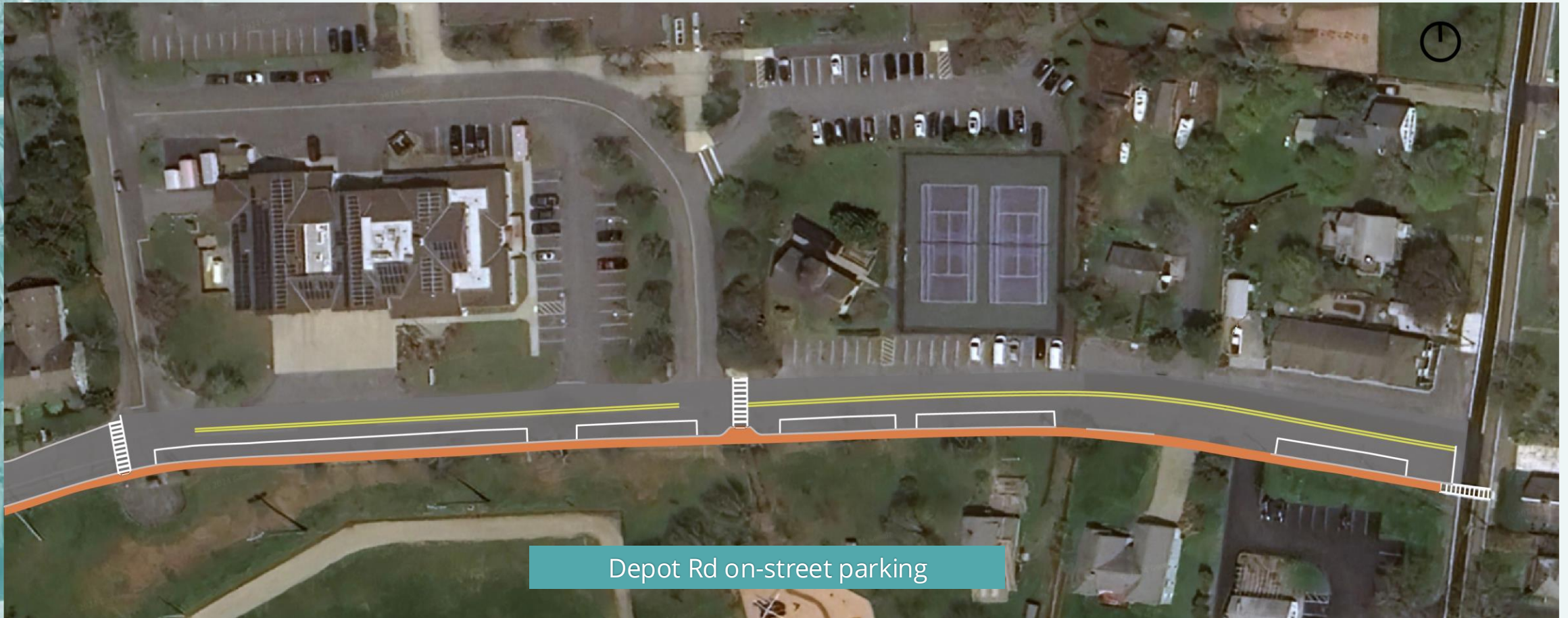


EV Charging Station Eastham, MA

# Depot Road

FORMALIZED ON-STREET PARKING

---



Depot Rd on-street parking

# Potential Circulation Management Solutions

POTENTIAL PARKING MANAGEMENT SOLUTIONS FOR CONSIDERATION

---

Downtown Shuttle Pilot

Overflow Parking Signage

Crosswalk Improvements

Loading Zones / Drop off

Bicycle Improvements

Fish Pier / Rotary Improvements

# Downtown Shuttle Pilot

CIRCULATION MANAGEMENT SOLUTIONS

- Revive a Downtown Chatham shuttle to provide visitors more comfort parking in the outer lots
- Incentivize use of shuttle by providing free rides
- Create pick-up/drop-off locations and incorporate onto parking maps across Downtown
- Private or public partnership
- Consider an electric shuttle



Electric Shuttle Plymouth, MA

# Overflow Parking Signage

CIRCULATION MANAGEMENT SOLUTIONS

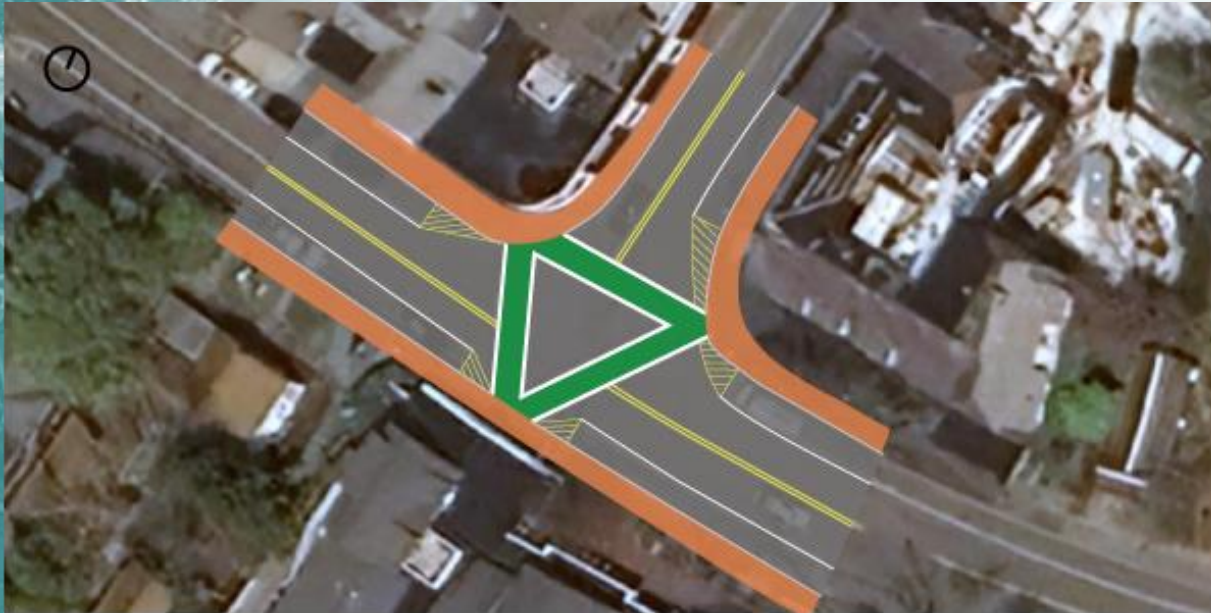
**LOT FULL?**  
ADDITIONAL PARKING  
AVAILABLE AT THESE  
NEAR-BY LOTS:



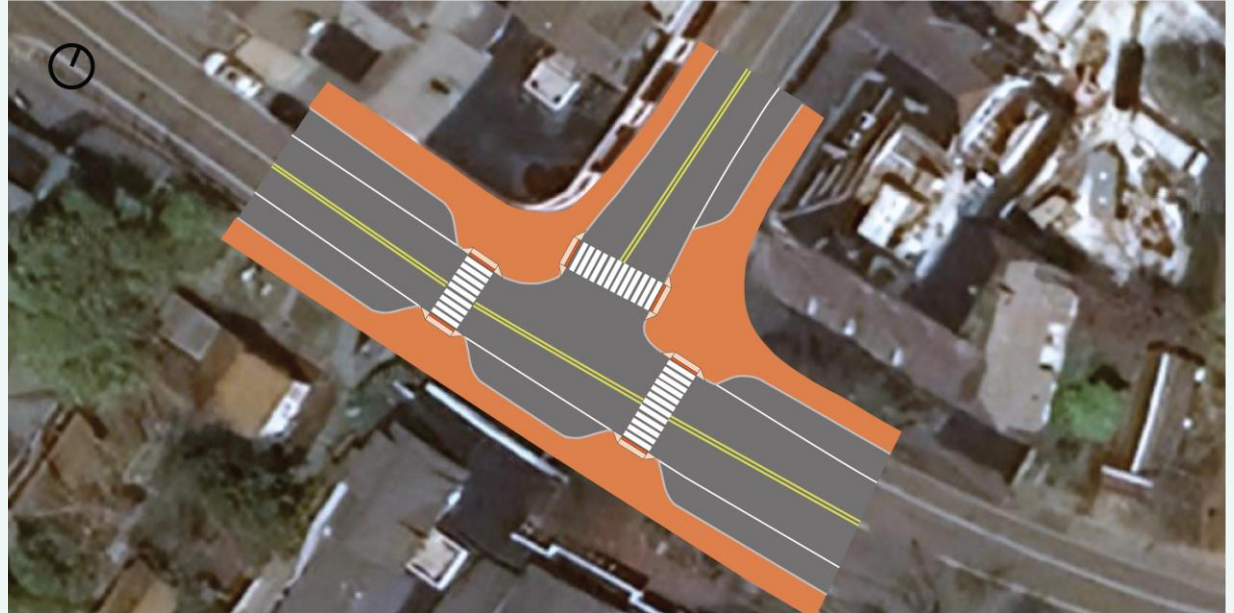
# Crosswalk Improvements – Chatham Bars Ave

CHATHAM BARS AVE CROSSWALK IMPROVEMENTS

---



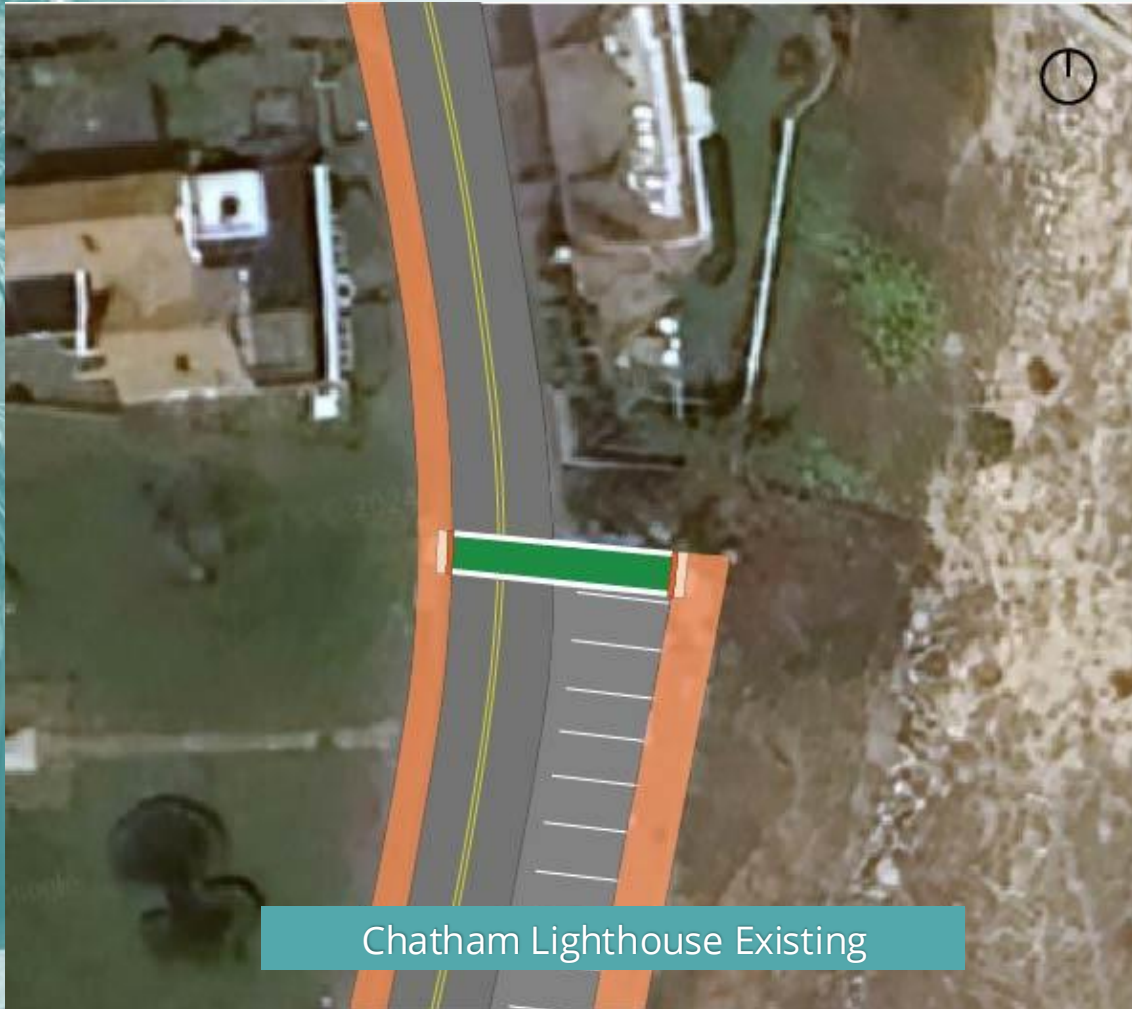
Existing



Proposed

# Crosswalk Improvements – Chatham Lighthouse

CHATHAM LIGHTHOUSE CROSSWALK IMPROVEMENT



# Delivery Vehicle Loading / Drop Off Zones & Hours

CIRCULATION MANAGEMENT SOLUTIONS

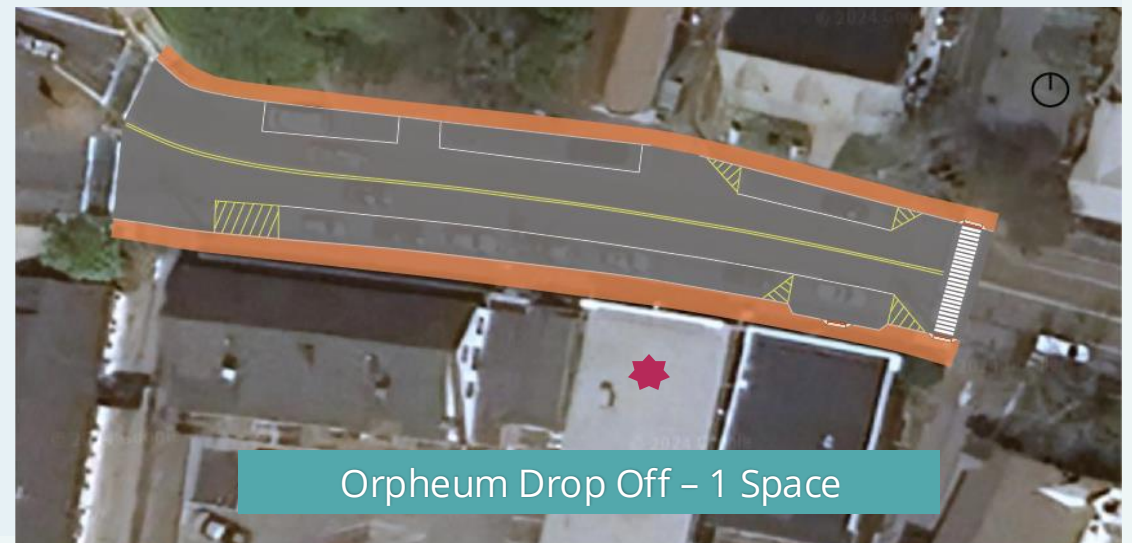
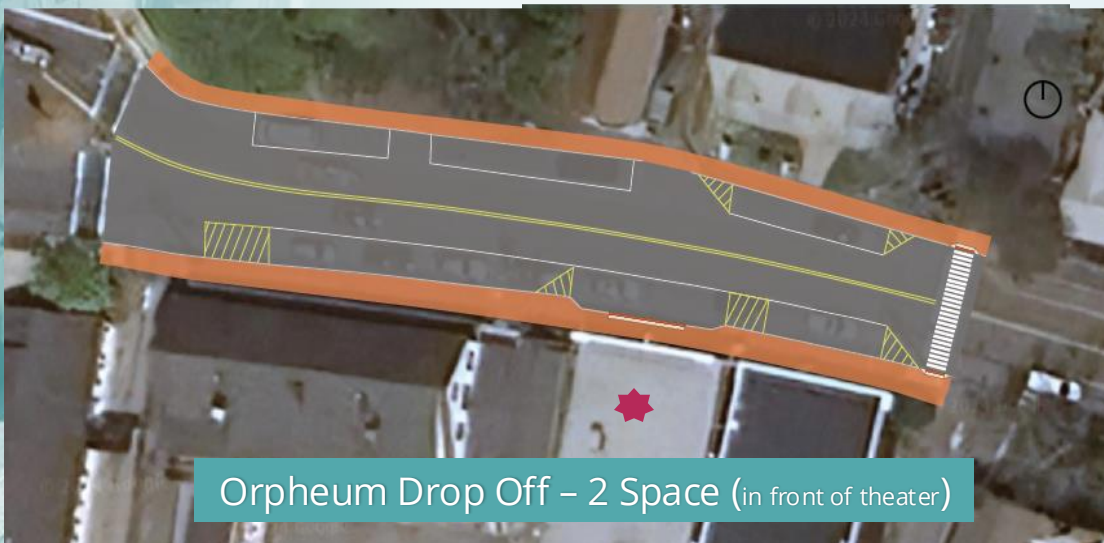
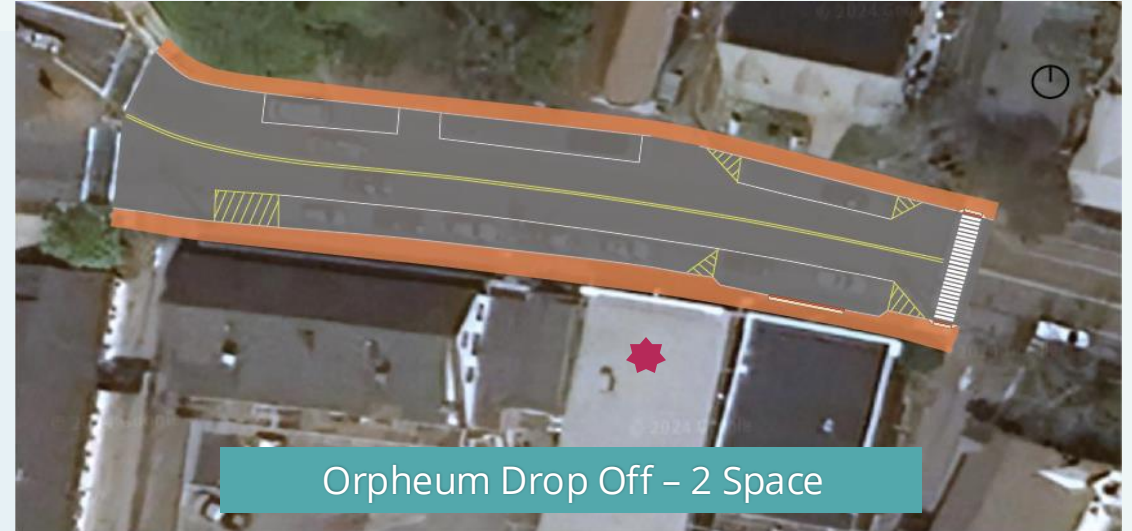
- Create designated delivery drop off parking spot / loading zone & hours
- “From April 1 through October 31, all deliveries on Commercial Street, between Pearl and Central streets, will only be allowed until 12:00 p.m.” - ***Provincetown, MA***



Delivery Vehicles

# Orpheum Drop-Off Zone

CIRCULATION MANAGEMENT SOLUTIONS



# Bicycle Improvements

## BICYCLE PARKING & SHARE THE ROAD PAVEMENT MARKINGS

- Uniform bicycle racks in every parking lot throughout Downtown Chatham
- Paint sharrow markings on Main Street, Depot Road & Shore Road to encourage motorists to share the road (Bridge Street Chatham)



Parking and Sharrows, Dennis



Bicycle Parking in Downtown Chatham

# Fish Pier Improvements

POTENTIAL IMPROVEMENTS TO TRAFFIC FLOW AND PARKING AT THE CHATHAM FISH PIER

- Install crosswalks at the Shore Road @ Barcliff Ave intersection
- Consider making Shore Road @ Barcliff Ave an all-way stop (further analysis needed)
- Create more time-restricted parking spaces
- Implement paid parking for vehicles staying over a certain time limit (1-2-hour free parking)
- Temporary parking when barriers are in place at the southern driveway
- Close the southern driveway and install additional spaces
- Electric vehicle charging station(s)





# Downtown Rotary Improvements

DOWNTOWN CHATHAM ROUTE 28 ROTARY TRAFFIC COUNTS



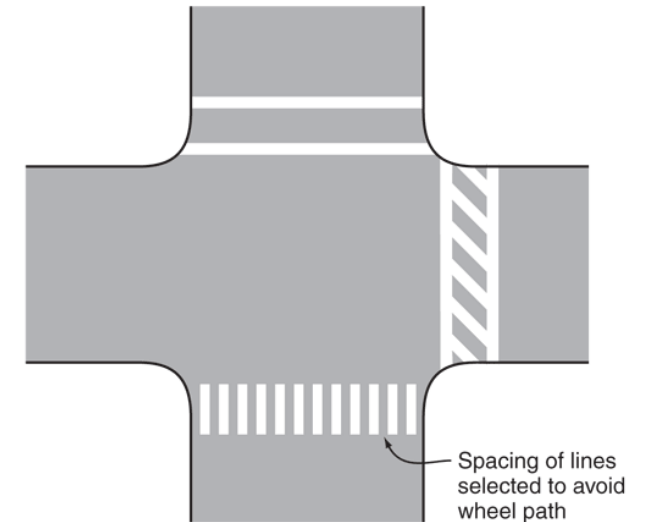
CCC Staff Setting Up Traffic Recorder on 7/22/2024

# Other Potential Solutions

POTENTIAL DOWNTOWN-WIDE PROJECTS TO IMPROVE PARKING & SAFETY

- Update all Main Street green crosswalks to MUTCD standards
- More lighting in parking lots - (Veterans' Field)
- Restripe the Chatham Community Center Parking Lot
- Update 'You are here' maps within Downtown and add locations
- Bulb out the historic rock fountain at Cross Street
- Formalize the desired path through Veterans' Field Playground connecting the Community Center to the stairway onto Depot Road
- Create a Downtown Business District to oversee parking needs and funding

Figure 3B-19. Examples of Crosswalk Markings



ADA & MUTCD Compliant Crosswalk

# Next Steps

WHERE DO WE GO FROM HERE?

- Public Comment Period - open until **August 18**
- Draft report and presentation of report to the PSWG – Fall 2024
- Final report – Fall 2024



Main Street at Seaview Street Intersection

# The Road Ahead

## PROJECT TIMELINE

Summer '23

**Data Collection:**  
Parking lot counts on 7/28, 8/5, 8/7, & 8/22

Fall '23

**Project Overview:**  
Review methodology and data, meet with Parking Solutions Working Group and build a path forward

Winter '24

**Alternative Analysis:**  
Through the Working Group, create potential alternatives to improve parking and circulation in Downtown Chatham.

Summer '24

**Alternatives Review:**  
Present potential alternatives to Town staff, Working Group and Public and solicit feedback on potential improvements

Summer/  
Fall '24

**Draft Report:**  
A draft report delivered to the Town for feedback outlining the entire study process and the preferred alternatives

Fall '24

**Final Report:**  
A final report will conclude the project and be delivered to the Town.

# Public Comment

IT'S TIME TO HEAR FROM YOU!

- Public Comment Period open until August 18, 2024
  - Email: [\*\*david.nolan@capecodcommission.org\*\*](mailto:david.nolan@capecodcommission.org)
- Please provide feedback on management solutions you **support**, solutions you **object** or **other ideas** you think were missed.
- Visit a posterboard and talk to staff around the room and provide your feedback



# All Potential Solutions

IT'S TIME TO HEAR FROM YOU!

- Uniform signage
- Parking Time Restrictions
- Defined Parking Spaces - Main St.
- Paid Parking
- Employee/vendor parking
- Formalized parking on Depot Rd.
- Downtown Shuttle
- Overflow Parking Signage
- Crosswalk upgrades
- Uniform bicycle parking
- Share the road pavement markings
- Designated delivery zone/hours
- Updated "You Are Here" maps
- Formalized path through the Veterans' Field Playground
- Rotary Upgrades
- Crosswalks at the Shore Rd. @ Barcliff Ave Intersection
- More time restricted parking at the Fish Pier
- Additional parking replacing the southern Fish Pier parking lot driveway

# THANK YOU

[david.nolan@capecodcommission.org](mailto:david.nolan@capecodcommission.org)

---

[www.capecodcommission.org/cpcs](http://www.capecodcommission.org/cpcs)

JULY 30, 2024 – CHATHAM TOWN OFFICE ANNEX



CAPE COD  
COMMISSION